



RESERVAL GAS RATIO LOG



WELL : ROCKHOPPER-1 ST 1

FROM (m): 1950	TO (m): 3510	SCALE: 1/ 500
----------------	--------------	---------------

Country : AUSTRALIA		Latitude : 39 47' 34.1828" S		762mm (30") at (m MDRT) : 157.00		Spud Date : 20-01-2010	
Region : TASMANIA		Longitude : 145 26' 21.4660" E		340mm (13 3/8") at (m MDRT) : 961.00		Total Depth Date : 03-02-2010	
Field : ROCKHOPPER		X (m) : 366376.031		245mm (9 5/8") at (m MDRT) : 1965.00		Total Depth (m MDRT) : 3482.0	
Permit : T/18P		Y (m) : 5594075.423				Total Depth (m TVSS) : 3158.0	
Well Type : APPRAISAL		RT-Sealevel (m MSL) : 26				Status : P&A	
Rig Name : KAN TAN 4		RT-Seabed (m) : 100.3					

GAS RATIOS FORMULAE

GAS WETNESS RATIO (Wh)  
GWR = ( C2 + C3 + C4 + C5)/ (C1 + C2 + C3 + C4 + C5)\*100

LIGHT TO HEAVY RATIO (Bh)  
LHR = (C1 + C2)/(C3 + C4 + C5)

OIL CHARACTER QUALIFIER (Ch)  
OCQ = (C4 + C5)/(C3)

	Dolomite		Claystone		Argil Siltstone		Calcareous
	Calcirudite		Siltstone		Sandy Siltstone		Dolomitic
	Calcarenite		Sandstone		Calcareous Siltstone		Fossils
	Calcsiltite		Coal		Argil Sandstone		Foraminiferae
	Calclutite		Intrusive Volcanics		Calcareous Sandstone		Carbonaceous
	Sandy Claystone		Volcaniclastics		Dolomitic Sandstone		Chert
	Silty Claystone		Tuff		Silty Sandstone		Pyrite
	Calcareous Claystone		Cement				Glauconite
	Argil Calclutite						Mica

GEOSERVICES CREW

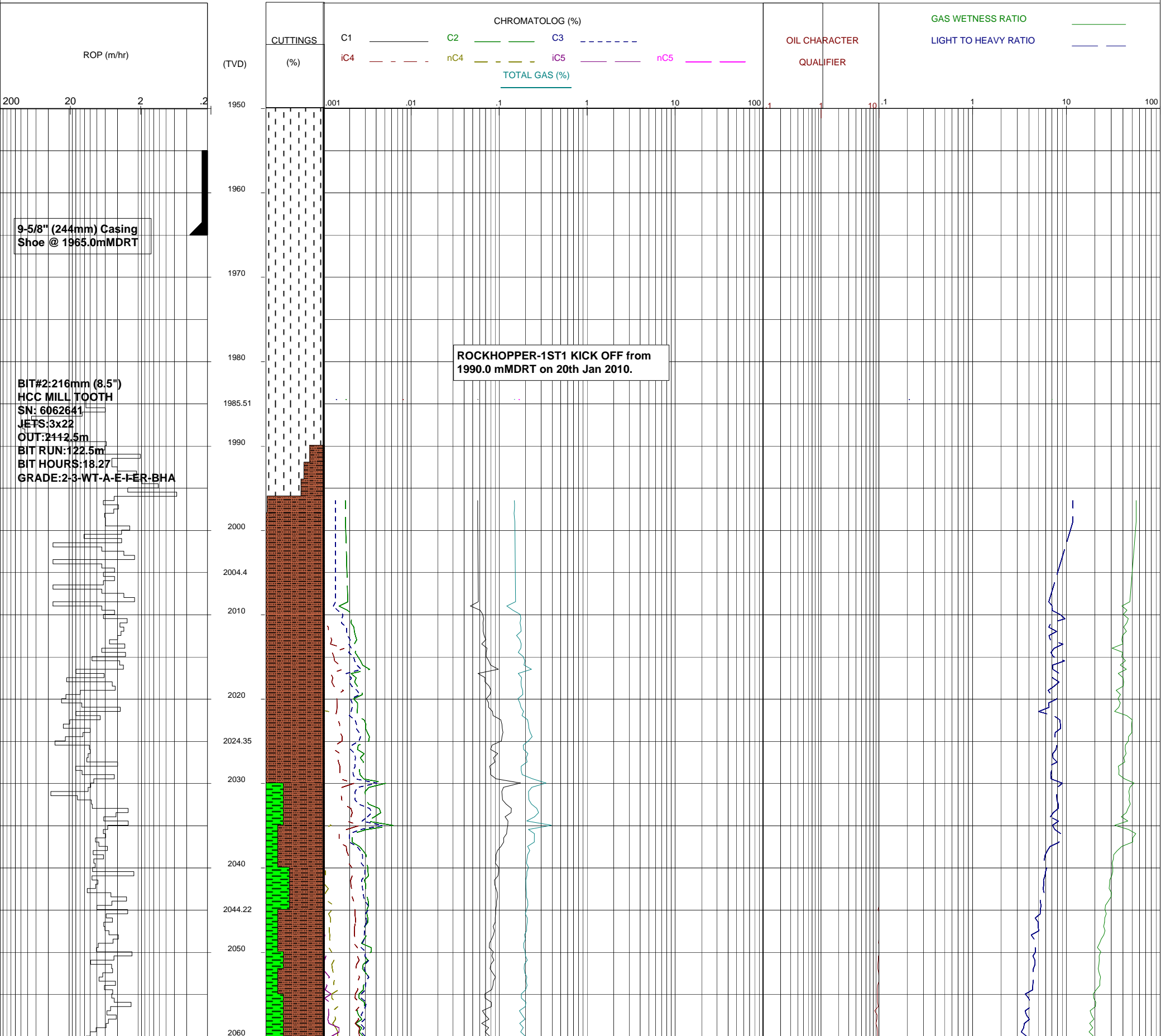
ALS ENGINEERS

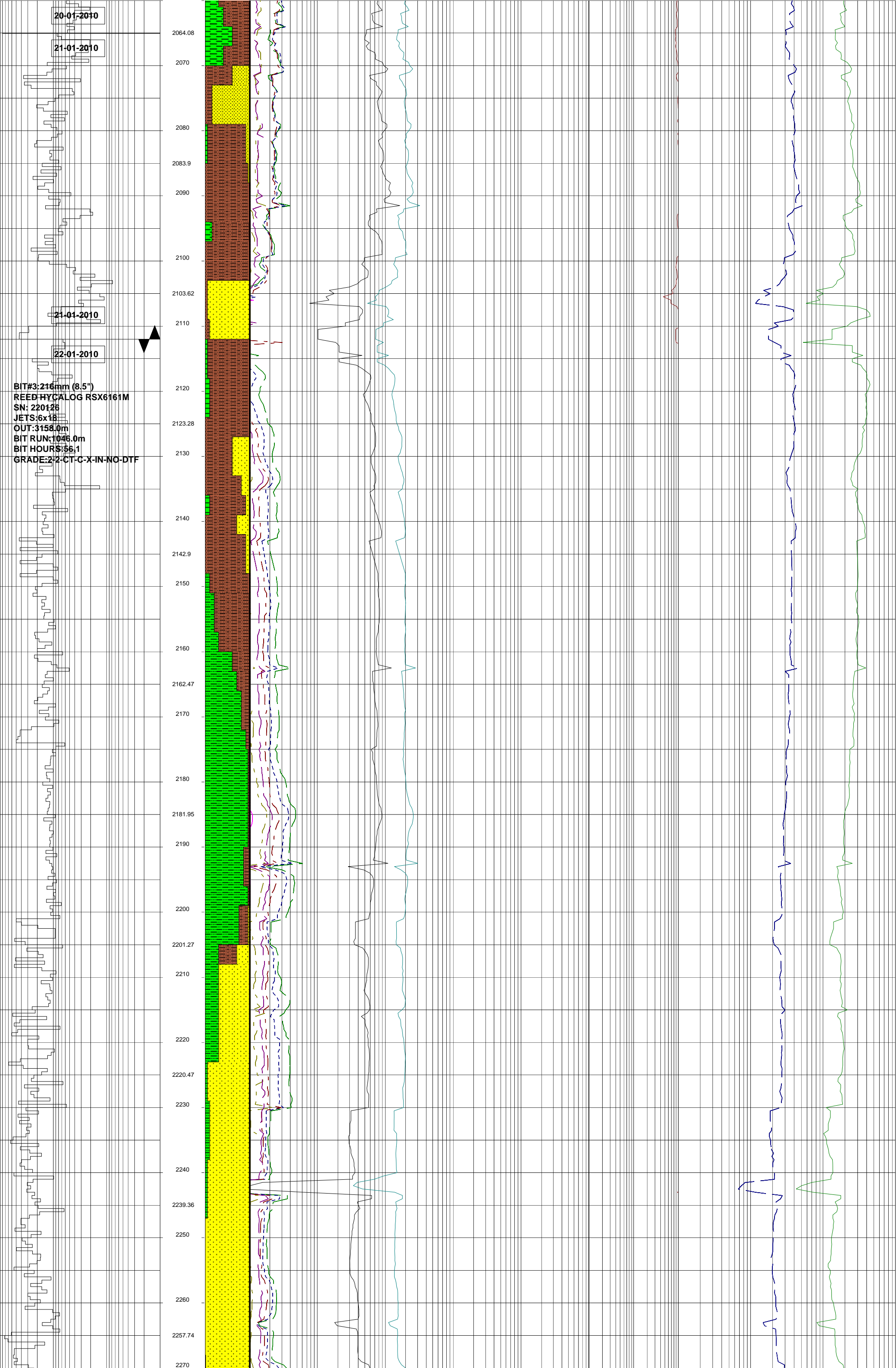
C.Higgins  
L.Hannon

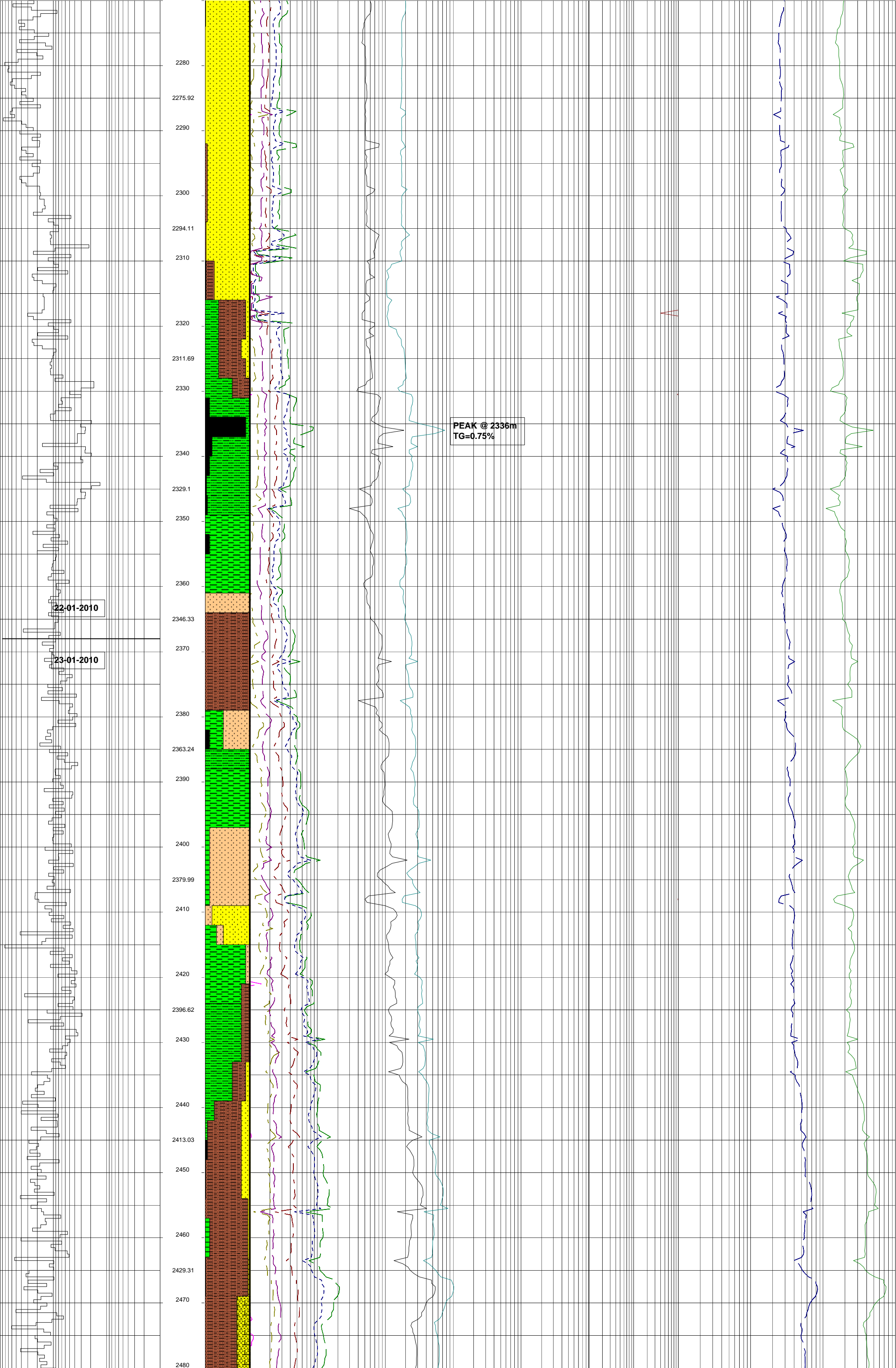
MUDLOGGERS

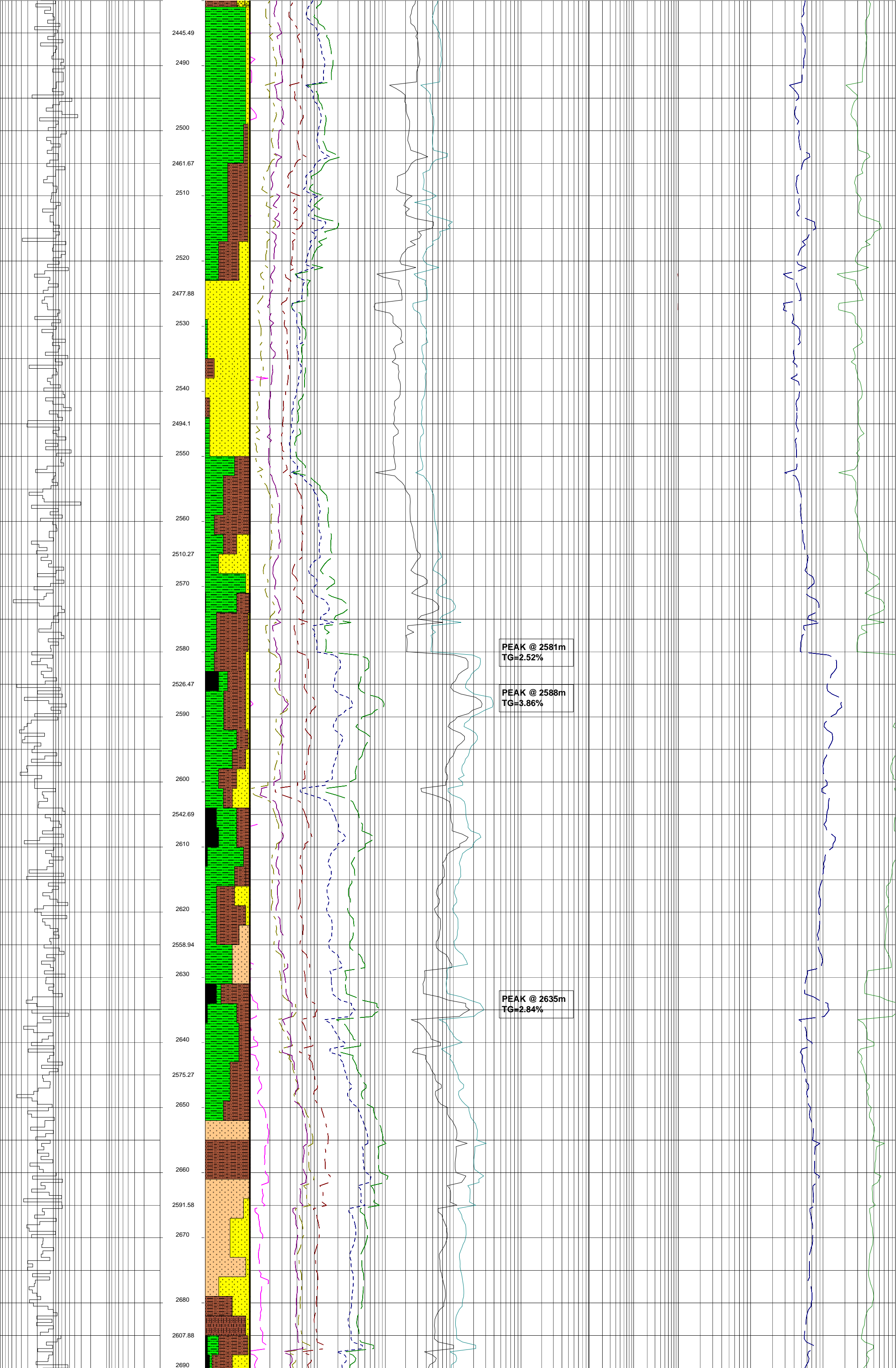
G.Fernandes  
k.Vellauthapalli

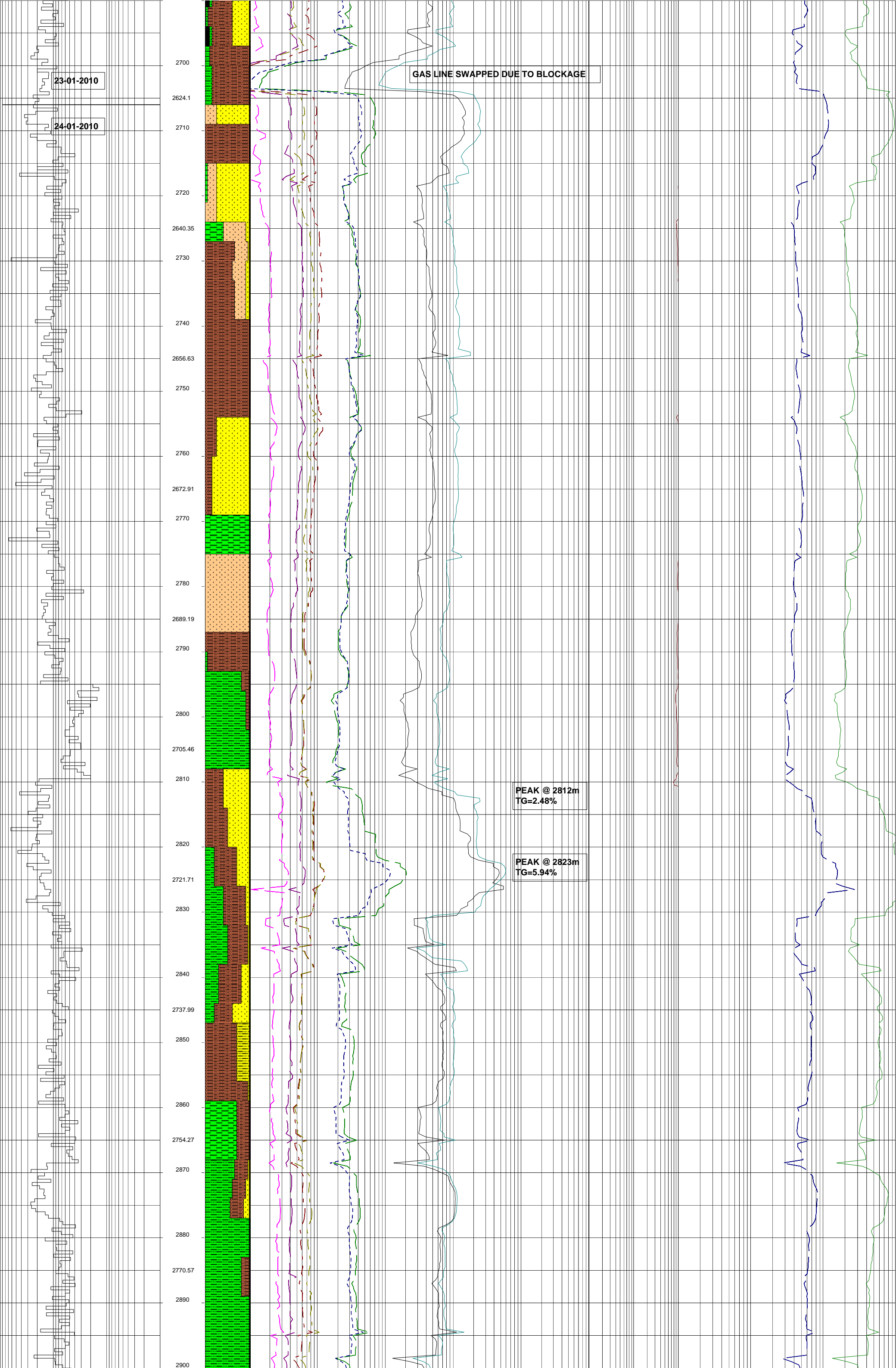
DEPTH mMDRT

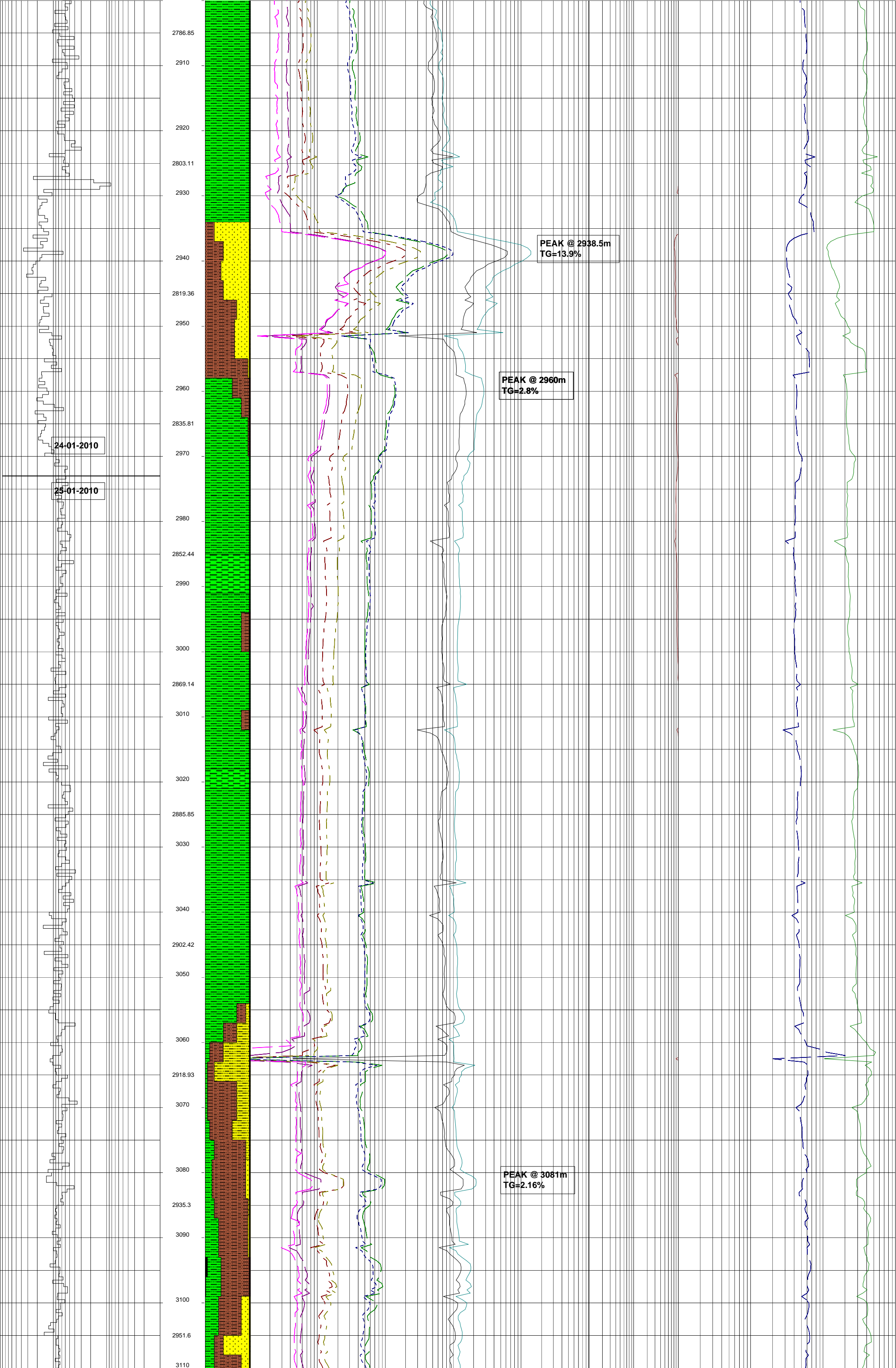




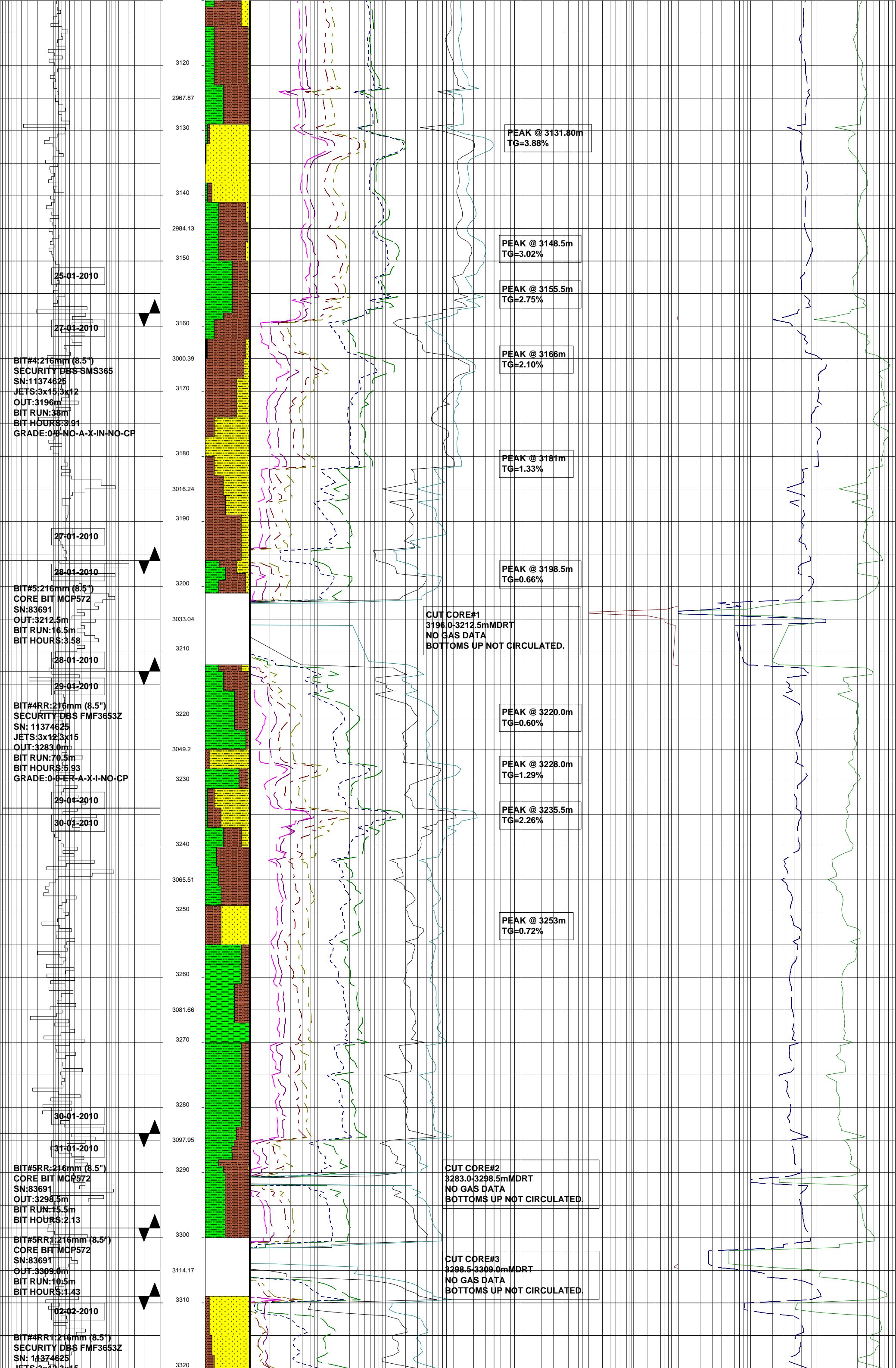










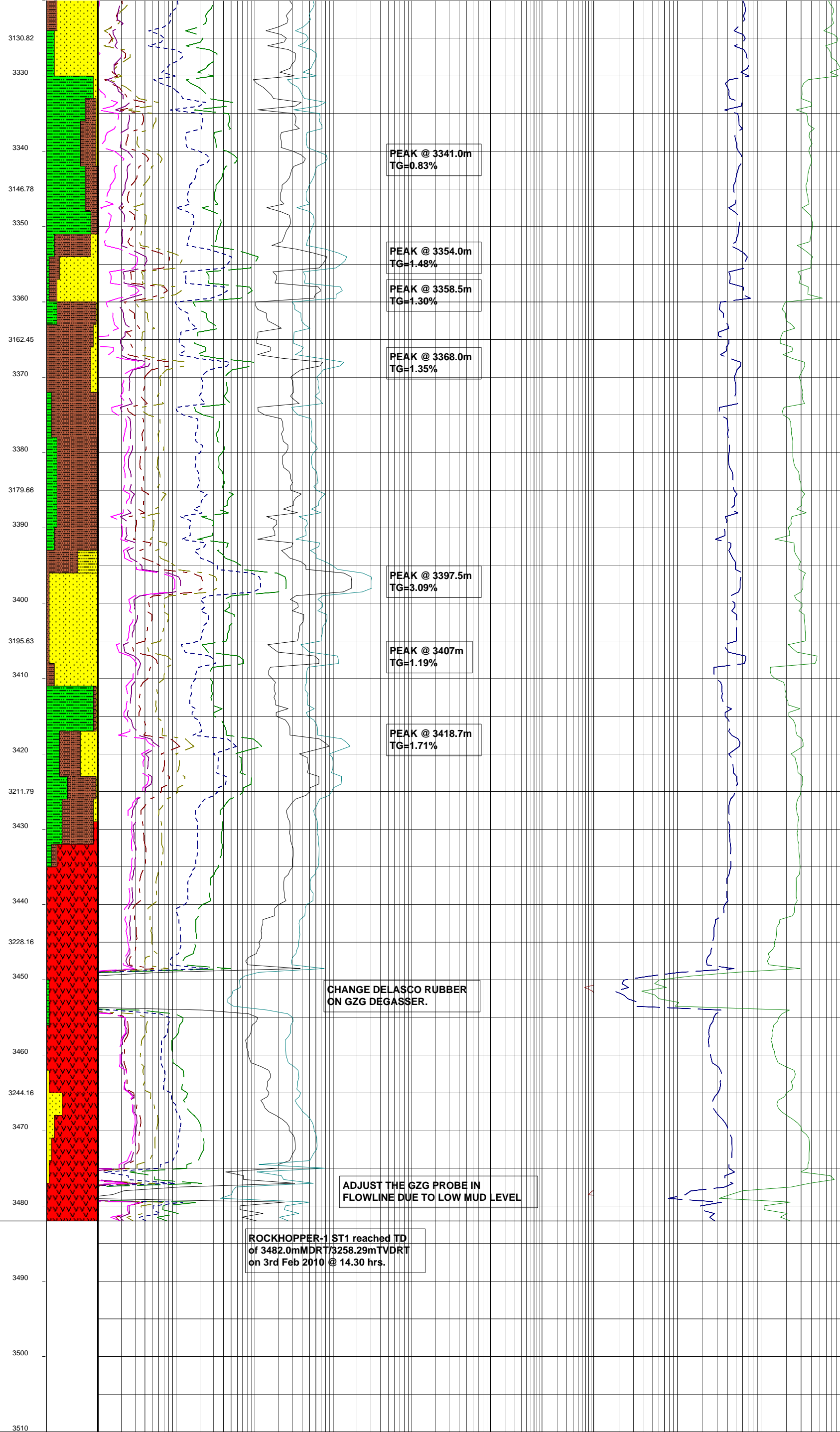


OUT:3482.0m  
BIT RUN:173.0m  
BIT HOURS:15.6  
GRADE:0.0 RR-A-X-I-NO-TD

02-02-2010

03-02-2010

CIRCULATION TIME  
FROM TD PRIOR TO  
POOH=3.16HRS.



PEAK @ 3341.0m  
TG=0.83%

PEAK @ 3354.0m  
TG=1.48%

PEAK @ 3358.5m  
TG=1.30%

PEAK @ 3368.0m  
TG=1.35%

PEAK @ 3397.5m  
TG=3.09%

PEAK @ 3407m  
TG=1.19%

PEAK @ 3418.7m  
TG=1.71%

CHANGE DELASCO RUBBER  
ON GZG DEGASSER.

ADJUST THE GZG PROBE IN  
FLOWLINE DUE TO LOW MUD LEVEL

ROCKHOPPER-1 ST1 reached TD  
of 3482.0mMDRT/3258.29mTVDRT  
on 3rd Feb 2010 @ 14.30 hrs.